

lemon queen



**ECO-BOOTH: OUR BEST PRACTICES**



# *Environmental* **RESPONSIBILITY**

An integrated policy: a versatile use, the possibility of reusing products, making the product more economical, more profitable, and more environmentally friendly in terms of its impact on the planet.

After an environmental assessment conducted on each of our products, the daily objective is to reduce its impact in all aspects. The choice of materials, their simple assembly for recycling, mass optimization for transportation, and efficient use of storage space are the conditions for adopting a «Greener Attitude», by incorporating this concern since the development stage.



## LEMON QUEEN'S *eco-responsibility* IS BASED ON THREE COMMITMENTS

Prioritize raw materials and products that are recycled or biodegradable.

Minimize the impact of our operations on the environment through more eco-friendly machinery and the optimization of the manufacturing process.

Ensure the recycling of raw materials and used products.



# AN *ecological efficient* STRATEGY

Lemon Queen's strategy is primarily an ecological efficient strategy, encompassing the project's design, materialization, and the application of innovative technologies during construction. These technologies have a significant impact on the environment.

Therefore, we consider reducing residual materials and furniture. These materials are treated in a modular manner, making them more easily reusable. To ensure the long-term delivery of value and results, it is essential to promote cooperation among individuals in an environment of mutual trust. Both our subcontractors and us are committed to environmental responsibility, as demonstrated by the use of the detailed materials on the next pages.



# Materials **USED**

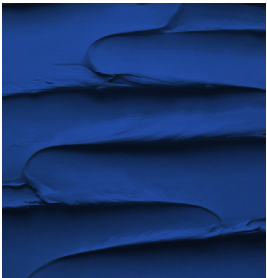
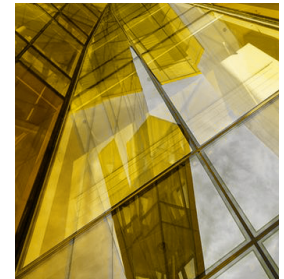


## **WOOD JOINERY**

Wood joinery is crucial in our designs. We work with wood from the group EGGER, which has received various awards and certifications for the sustainable use and preservation of its wood. This includes the Austrian state award for highly eco-compatible logistics systems, as well as PEFC and FSC certifications, and ISO 14001 certification.

## **GLASS**

For the construction and assembly of our stands, we use toughened or laminated glass due to its extended lifespan resulting from its high durability. When one of the glass plates breaks, the reuse process begins, which involves cutting the plate into smaller pieces. If a portion of the glass cannot be reused, it is deposited into the appropriate container. The recycling company's collection service regularly replaces these containers.



## **PAINTS AND VARNISHES**

For our projects, we use high-quality solvent-free paints, fabrics, and varnishes.

## **LETTERING**

We work with top-quality products, using HP Latex inks. In addition to delivering incredible image quality, consistency, and durability, HP Latex inks also have a very favorable environmental profile.



# Materials USED

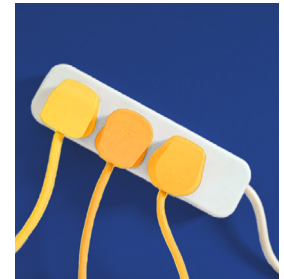


## **PLASTIC**

We are mindful of the importance of recycling all products. That's why two of the plastics we use, cast methacrylate and polycarbonate, are derived from recycling processes.

We use materials with the lowest environmental impact, such as LED lighting, systems' structures covered with reused materials, and platforms with structures made from previously used materials. We recycle fluorescent tubes, energy-saving and discharge lamps, LEDs, and general lighting fixtures.

## **ELECTRICITY**



## **ALUMINUM STRUCTURES**

The aluminum structures are entirely recovered at the end of the event. Occasionally, the structures are melted down and remanufactured. This way, we provide a top-quality service.

## **FABRICS AND TAPESTRIES**

The use of wool and PVC-based fabrics is currently limited. In their place, biodegradable fabrics have been developed, which are highly useful for sign manufacturing and exhibit exceptional mechanical properties.

